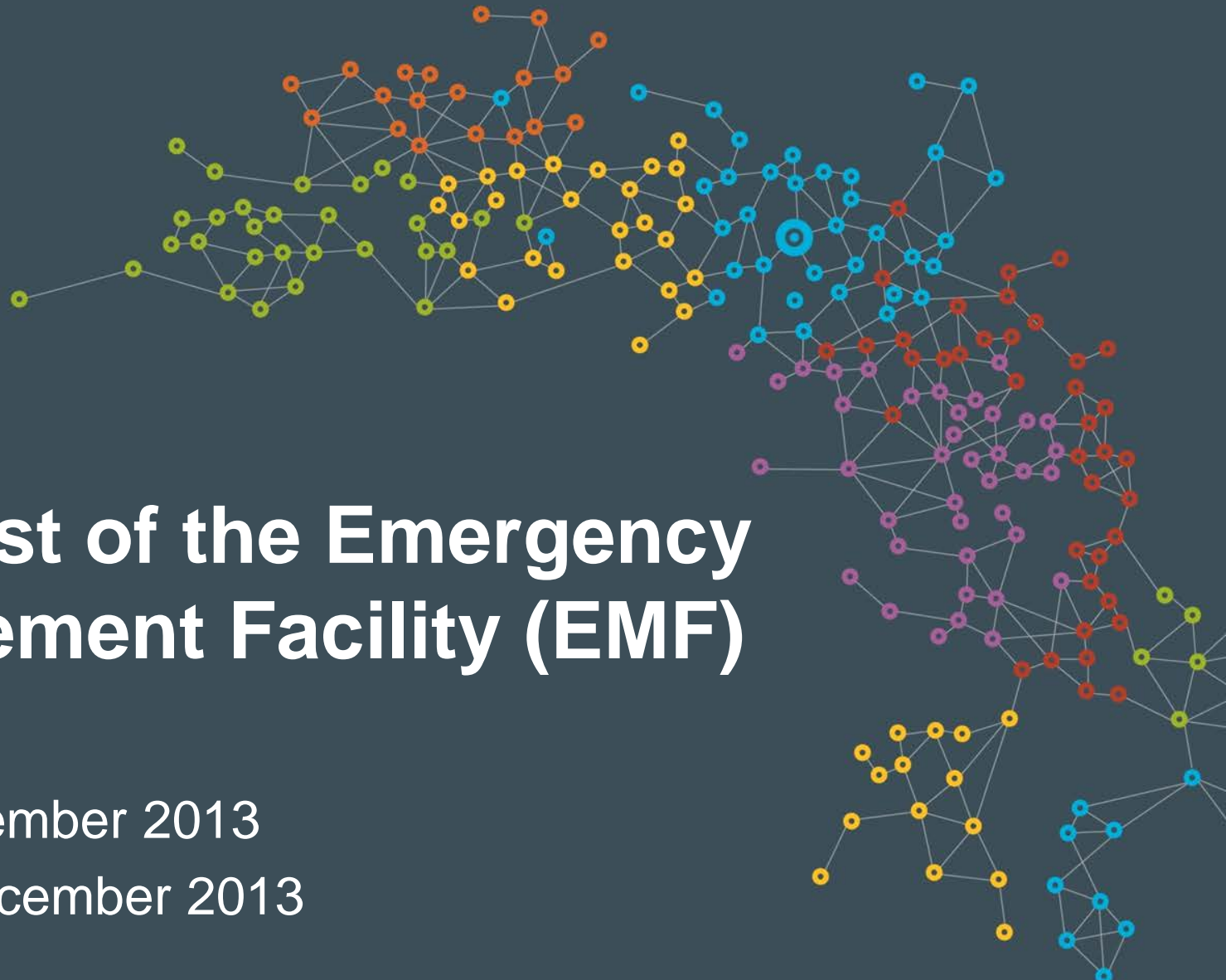




INDEPENDENT  
MARKET  
OPERATOR



# GSI: Test of the Emergency Management Facility (EMF)

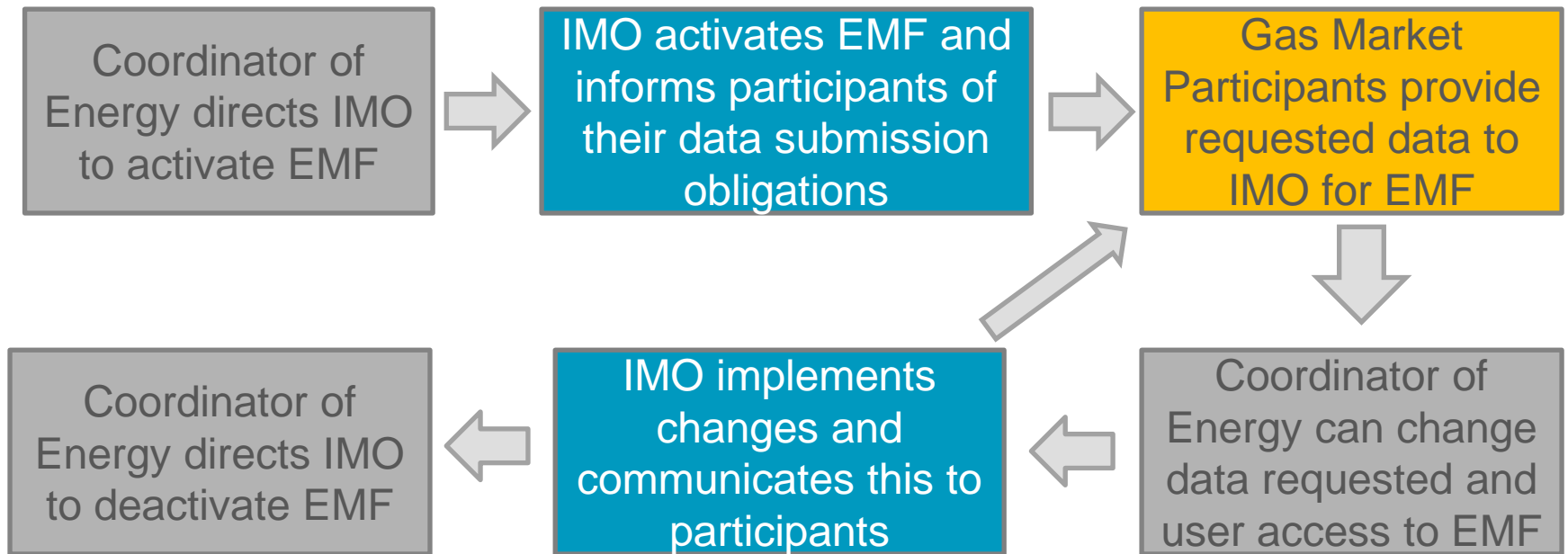
8am 2 December 2013  
– 6pm 3 December 2013

# Agenda

- Purpose of EMF
- Planning of Test
- Activation of EMF – 2 December
- Data Requested during the test
- What the EMF Screen looks like: EMF Home Screen
- What went well?
- What could be improved?

## Purpose of EMF

- EMF is a dormant information collection platform on the Gas Bulletin Board.
- Activated only in the case of a Gas Supply Emergency or a test.
- Information collected can only be viewed by users authorised by the Coordinator of Energy, as some of the data is commercially sensitive.




## Planning of Test

- Public Utilities Office (PUO) coordinated with IMO to plan first test of Emergency Management Facility (EMF).
- EMF test was planned in advance between PUO and IMO.
- Participants were given notice of planned test. The next test may be called without notice to IMO or participants.

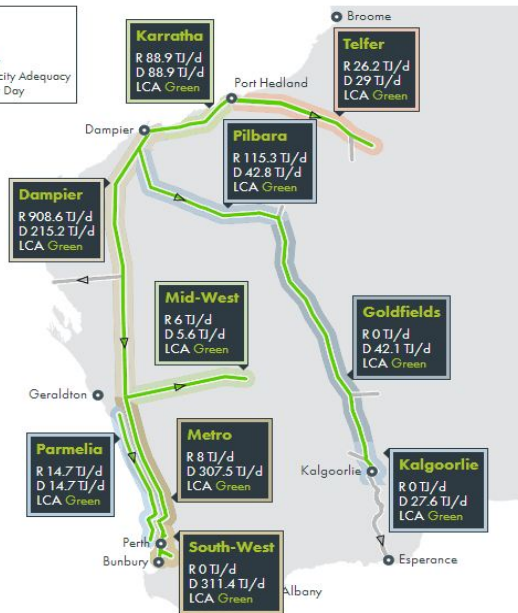
# Activation of EMF – 2 December 2013

- Assistant Director of Emergency Management at PUO issued an EMF Direction to Activate the Test of the EMF at 7.35am.


LOG IN
EMF IS ACTIVE

HOME
NETWORK
PARTICIPANTS
STANDING DATA
REPORTS
DOCUMENTS

**Legend**  
 R - Forecast Receipt  
 D - Forecast Delivery  
 LCA - Linepack Capacity Adequacy  
 TJ/d - Terajoules per Day



**Dampier to Bunbury Pipeline**  
 Capacity: 845 TJ/d  
 Zones: Dampier, Metro, South-West

**Goldfields Gas Pipeline**  
 Capacity: 155 TJ/d  
 Zones: Pilbara, Goldfields, Kalgoorlie

**Midwest Pipeline**  
 Capacity: 10.6 TJ/d  
 Zones: Mid-West

**Pilbara Energy Pipeline**  
 Capacity: 166 TJ/d  
 Zones: Karratha

**Parmelia Gas Pipeline**  
 Capacity: 65.4 TJ/d  
 Zones: Parmelia

**Telfer Pipeline**  
 Capacity: 29 TJ/d  
 Zones: Telfer

**Gas Production Capacity**  
 Beharra Springs Gas Production Facility: 12 TJ/d  
 Devil Creek: 220 TJ/d  
 Dongara Production Facility: 7 TJ/d  
 Karratha Gas Plant: 630 TJ/d  
 Macedon: 200 TJ/d  
 Varanus Island: 390 TJ/d

**Mondarra Gas Storage Facility**  
 - LCA: Green  
 - Receipt Capacity: 70 TJ/d  
 - Delivery Capacity: 119.6 TJ/d  
 - Receipt Nomination: 0.5 TJ/d  
 - Delivery Nomination: 0.5 TJ/d



DISCLAIMER CONTACT US


You agreed to the Gas Bulletin Board [Terms of Use](#) on 02/12/2013, at 8:11 AM



# Data Requests During Test

- **Pipeline Operators**: Submit Actual Flows data for Gas Day D at 9am on D+1, and update this data at 12pm daily.
- **Operators of Large User facilities Capable of using *Alternative Fuels***: provide an update on the stocks of these fuels by 9am daily.
- **All Operators of Large User facilities**: Provide update of current percentage output of their facility by 6pm on Day 1, and 12pm on Day 2.
- **DBP**: Provide update on number of compressor stations running at 10am on the Dampier to Bunbury Pipeline.
  
- **Additionally:**
  - IMO asked to provide information on locations of GBB Facilities.
  - EMF Users were added at the request of the PUO, and given varying levels of access to the EMF.
- **Day 2 of Test at 5.30pm**: EMF Direction to deactivate EMF and cease data requests.

# What EMF looked like: EMF Home Screen



- REGISTRATION ▾
- ACCESS CONTROL ▾
- COMMUNICATION ▾

- SUBMISSIONS
- EMERGENCIES
- ADMINISTRATION ▾


USER: DENTONR ▾

**EMF IS ACTIVE**  
GO TO EMF →

- HOME
- NETWORK
- PARTICIPANTS
- STANDING DATA
- REPORTS
- DOCUMENTS

## Emergency Management Facility


Notices Templates Actual Flows Alternate Fuels Emergency Standing Data Ad-hoc Data

 **TEST - EMF Direction**  
02/12/2013  
101.0 kb  
The Coordinator of Energy has directed the IMO to activate the Emergency Management Facility for the purpose of testing. The test will run until 1800 on Tuesday 3 December 2013.

 **TEST - EMF Direction 02122013**  
02/12/2013  
101.0 kb  
The Coordinator of Energy has directed the IMO to activate the Emergency Management Facility for the purpose of testing. The test will run until 1800 on Tuesday 3 December 2013.


 **Test EMF direction Modification**  
02/12/2013  
161.2 kb  
The Coordinator of Energy has modified the Emergency Management Facility direction for the purpose of testing. All large users will need to update Adhoc information.

 **Test EMF Direction Modification - 9am 3 December 2013**  
03/12/2013  
161.7 kb  
null



DISCLAIMER CONTACT US

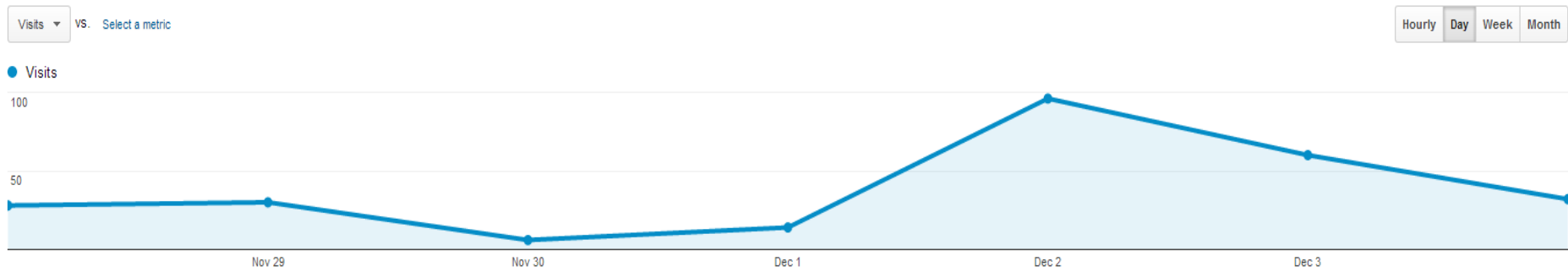
You agreed to the Gas Bulletin Board [Terms of Use](#) on 02/12/2013, at 8:11 AM

For information on gas flows in other Australian states visit 

© 2013 - IMO rev 1.0.9

# What went well?

- Communication between PUO and IMO was a success. All issued EMF Directions were executed thoroughly.
- GBB Facility Operators responded quickly to requests for data, and many actively contacted the IMO to clarify their obligations.
- The EMF page worked as designed, and EMF users were only able to access information that they had been granted by the PUO.
- There was a spike in visitors to the GBB during the test:





## What could be improved?

- Some GBB Facility Operators were unsure of what format their data updates should be in (example: units that stock of alternative fuel should be in, etc)
  - For future EMFs, IMO and PUO will be reviewing templates sent out to participants.
- Some Main Contacts for GBB Participants could not be contacted by the IMO on the day, and others were not in a position to provide the data in a timely manner.
  - The IMO may request that GBB Participants provide a second Administrative Contact
- Some users added to the EMF were unfamiliar with the GBB and how to navigate the website.
  - The IMO plans to create a shorter user guide to assist newly added users to navigate the EMF and GBB.

- First EMF test was considered a success.
- Any non-compliance with data requests will not be investigated, but may be in future tests.
- Next EMF test will be held in 2014.
  - Test may be unplanned and no notice given.
- If you have any questions/suggestions for the EMF, please contact IMO Market Operations at [operations@imowa.com.au](mailto:operations@imowa.com.au) or (08) 9254 4336.