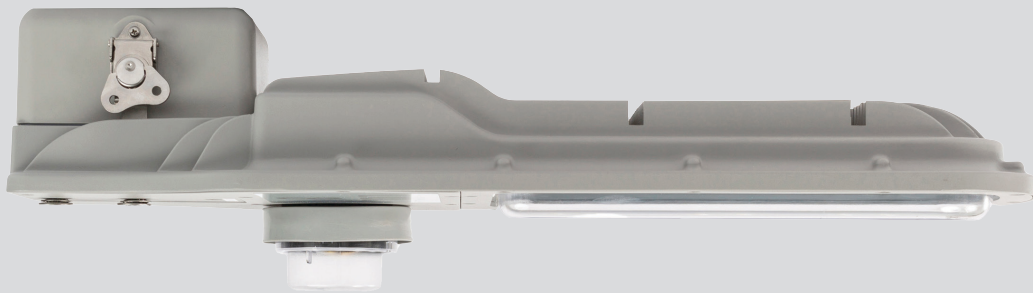


ALDRIDGE



P-LED II - 30W

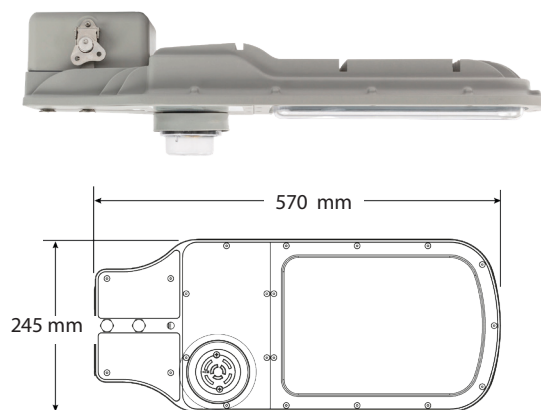
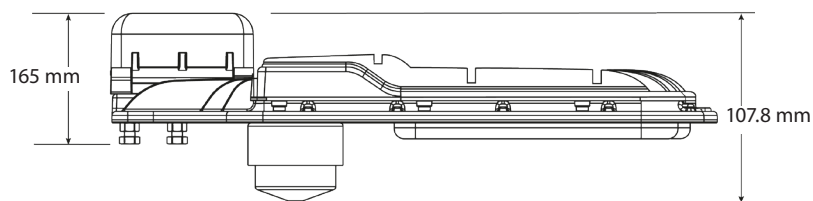


LED Lighting for Residential Roads



Z H A G A
Associate Member

Dimensions



P-LED II -30W

Features

- SmartCity Ready - TST compatibility Zigbee, LoRa, NBLoT
- High Performance Street Lighting luminaire designed to meet stringent Australian/New Zealand standards
- High Performance Optics designed to comply and meet Australian standards AS/NZS 1158.3.1:2020
- Direct replacement of conventional P-category Mercury Vapour, Metal Halide, High Pressure Sodium and Fluorescent luminaires
- Integrated thermal management
- Segregated termination chamber c/w quick access latch
- Self cleaning housing and PMMA optical diffuser
- Aero screen diffusers (AE)
- 20 year design life
- 10 year warranty

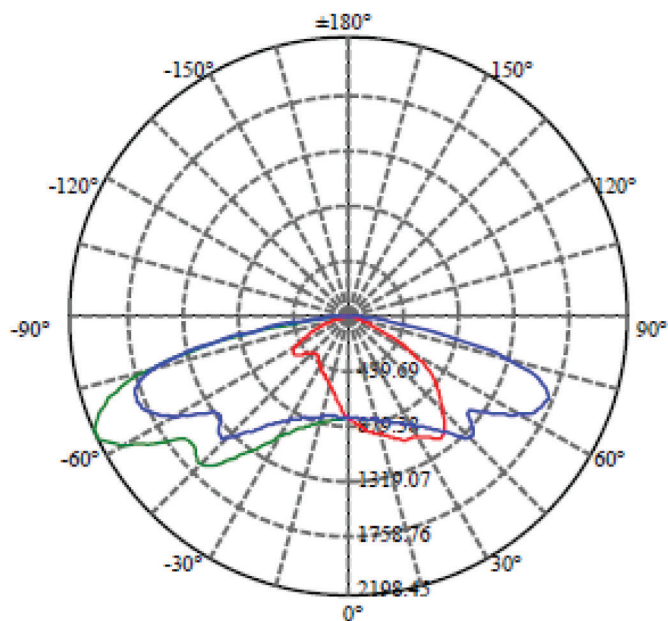
Options

- Controller:** Zhaga Book 18
- DALI-2** D4i Driver
- Fuse Terminal Block/FTB**
- Surge Protection Device/SPD20KVA**
- Class II/Double Insulated (DB)**
- Colour:** Grey (GR Standard), Black (BL), White (WH),
- CCT:** 4000K
- Visor:** Glareshield/anti-spill light kit (GV)



Technical Data

- Body:** High Pressure Marine Grade Die Cast Aluminum
- Optics:** P4 & P5 Distribution
- LED:** LUMILEDS
- System Watts:** 30
- Finishing:** Powder Coat Grey (Grey Standard)
- Mounting:** 4 - 9 Metres
- Fixing:** Side Spigot Mount (27-35mm OD)
- IP rating:** IP65
- IK rating:** IK08
- Voltage:** 100V - 240V 50/60Hz
- Power Factor:** >0.9
- Controller:** 7 Pin NEMA receptacle (std)
- Surge Protection Device (SPD) :** 10KVa Standard



Specification P-LED II

PRODUCT CODE	P30W.N7PBP
System Watts	30
Input Voltage	100V - 240V 50/60Hz
CCT (K)	2700/3000/4000
CRI	Ra>80
IP Protection	IP65
IK Protection	IK08
Weight (Kg)-max.	5.05kg